

CONTENTS

4.19 ARCHAEOLOGY AND CULTURAL HERITAGE.....	4.19.1
4.19.1 Desktop Survey	4.19.1
4.19.2 Cultural Context	4.19.2
4.19.3 Field Investigations	4.19.7
4.19.4 Project Area Archaeological Finds	4.19.9
4.19.5 Assessment of Archaeological Finds	4.19.12
4.19.6 Additional Post-Assessment Fieldwork.....	4.19.17

TABLES

Table 4.19.1 : General Timeline of Relevant Armenian History and Prehistory	4.19.2
Table 4.19.2: Listing of Archaeological Finds	4.19.17

FIGURES

Figure 4.19.1: Map of cultural heritage finds in relation to Project components	4.19.14
Figure 4.19.2: Photographs of Archaeological Resources in the Project area.....	4.19.15
Figure 4.19.3: Photographs of Project area Terrain.....	4.19.16

APPENDICES

Appendix 4.19.1 Maps of Known Cultural Heritage Sites
Appendix 4.19.2 Excavations in 2012 at Zugy Aghbyur

4.19 Archaeology and Cultural Heritage

The archaeological and cultural heritage baseline has been collected through a combination of desktop research and fieldwork conducted by a team of Armenian and international archaeologists.

4.19.1 Desktop Survey

Desktop research included a literature review of published sources on Armenian history, prehistory and archaeology and systematic satellite imagery analysis of proposed Project component locations.

Desktop Survey: Literature Review

During the literature review, particular attention was paid to the mountainous region in southern Armenia where the Project is located. Additional research also focused on understanding the history of archaeological research in Armenia, providing a historical context for appreciating local archaeological research methodologies. Results from the desktop research contributed to the historic and cultural context presented below and have assisted the interpretation of field finds (see Appendix 4.19.1 and 4.19.2).

Desktop Survey: Satellite Imagery Analysis

The satellite imagery analysis involved a systematic review of aerial images of the Project area and a multispectral analysis of specific Project component locations to identify potential cultural heritage sites, referred to as cultural heritage anomalies. Cultural heritage anomalies were defined as potential archaeological or built heritage sites detectable through the analysis of both visible and non-visible wavelengths of light in satellite imagery. The multispectral analysis was conducted through the analysis of satellite images of Project component areas with four wavelength bands: Red, Green, Blue and Near-Infrared.

Anomalies identified during the satellite imagery analysis were targeted for further analysis in the field during field reconnaissance surveys. A number of landscape features are of a similar size and shape to archaeological resources making it difficult to confirm if an anomaly is in fact a cultural heritage resource. For example, kurgans and large stone piles created during agricultural field clearance can be of similar shape and size. During field reconnaissance survey Armenian archaeologists or ERM cultural heritage specialists visited anomalies to assess the likelihood that they represented archaeological sites.

4.19.2 Cultural Context

The Project area is located in southern Armenia, a mountainous area in the South Caucasus region, situated between Western Asia and Eastern Europe. Armenia's archaeological and historical wealth is evident in this region from vestiges of local prehistoric cultures as well as of later foreign influences. Armenia's long history includes periods of independence interspersed with periods of control by external forces. Its strategic location between two continents has made Armenia prone to invasion, the country having suffered occupations by the Assyrians, Greeks, Romans, Byzantines, Arabs, Mongols, Persians, Ottoman Turks and Russians.

Table 4.19.1 presents a brief timeline of Armenian history and prehistory, with a focus on southern Armenia. The information presented in the timeline was developed from standard published sources. The timeline provides a wider context for understanding and evaluating cultural heritage sites identified by the survey.

Table 4.19.1 : General Timeline of Relevant Armenian History and Prehistory		
Period	Date¹	Characteristics and Major Events
Paleolithic Period	2.5 million years ago – 10,000 BC	Movement of humans out of African continent; the earliest evidence of human occupation found outside of Africa north of the Project area, in the neighboring country of Georgia, dating as far back as 1.8 million years; development of basic stone tools; small groups relying on hunting and gathering.
Mesolithic Period	10,000 – 6,000 BC	Nomadic foraging economy exploiting favorable post-Pleistocene resources; movement of people into the areas formerly occupied by ice sheets; development of micro-lithic stone tool assemblages; bow and arrow used in hunting; beginning of plant domestication.
Neolithic Period	6,000 – 3,000 BC	Emergence of village life dependent on domestication of plants and animals; first traces of human settlement in the Project area; manufacture and use of obsidian tools; pottery; mud-brick and stone architecture; anthropomorphic female figurines.
Bronze Age	3,400 – 1,500 BC	Kura-Araxes culture (3500-2400 BC), economic stability based on cattle and sheep raising; Trialeti culture (2200 – 1500 BC); local warlords emerge as men of wealth and power; burial mounds; bronze weapons.
Iron Age	1,500– 600 BC	Development of iron metallurgy, Nairi (1200 – 800 BC), Urartian culture (1000 – 600 BC), advanced agricultural practices.

Table 4.19.1 : General Timeline of Relevant Armenian History and Prehistory		
Period	Date¹	Characteristics and Major Events
Antiquity/Antique Period	590 BC – AD 646	Kingdom of Armenia, expansion under the rule of Tigranes the Great, Hellenism, Armenia becomes Roman province (AD 114-118); Christianity becomes the state religion (AD 301); foreign incursions from Roman, Byzantine, and Parthian Persian empires.
Middle Ages	AD 646 – 1375	End of Byzantine and Parthian partition of Armenia. Autonomous Emirate of Arminiya under Umayyad Caliphate; Independent Kingdom of Armenia (858-1045); Turkish control (1071-early 12 th century); invasions by Mongols and other Central Asian tribes.
Period of Foreign Control	AD 1376 – 1918	Continued invasions from Central Asian groups; parts of Armenia controlled by Ottomans & Persians, then Ottomans & Russians after the Russo-Persian War (1826-1828); WWI; Armenian Genocide; Democratic Republic of Armenia declared independent in 1918.
Modern Period	1919 – Present	Territorial wars with Georgia, Azerbaijan and Turkey; communism introduced; Armenian Soviet Socialist Republic joins the Soviet Union; WWII; Soviet Union dissolves and Armenia regains independence (1991); formation of modern Armenian national identity.
Note: ¹ Dates are approximate		

Palaeolithic Period

Evidence of human occupation has been recorded in Armenia as early as the Paleolithic Period, a time when small groups of hunter-gathers made their way out of the African continent and slowly began to populate Europe and Asia. The Republic of Georgia, which borders Armenia to the North, is home to the earliest evidence of human occupation found outside of the African continent at the site of Dmanisi, a site dating to 1.8 million years ago. Such remains may be present in Armenia as well. The use of rudimentary stone tools is the most significant technological development during this period. One of the oldest archaeological sites in Armenia is the Lower Palaeolithic site of Satani-Dar, where hand-axes, thick flakes, and rough chopping tools of obsidian and dacite have been found¹. An archaeological survey conducted in 2009 documented Paleolithic, Neolithic/Chalcolithic and Bronze Age artefacts in the Debed river valley in north-eastern Armenia². Other Palaeolithic

¹ A. Mongait. 1961. *Arkhaeologiya v SSSR*. Moscow, 1955, English Translation by M. W. Thompson, London.

² Egeland, Charles P., Boris Gasparian, Dmitri Arakelyan, Ryan M. Byerly, Christopher M. Nicholson & Diana Zardaryan. Sept 2011. "Multiperiod archaeological reconnaissance in the Debed river valley, north-eastern Armenia". *Antiquity*. Vol. 085, Issue 329.

sites containing Acheulean Period and Mousterian Period tools have been recorded, but they are found primarily in northern Armenia³.

Mesolithic Period

The Mesolithic period in the Caucasus coincides with the milder climate associated with the onset of the Holocene. Humans continued to hunt but also developed wider-ranging foraging economies to exploit the more abundant resources that resulted from the milder environmental conditions of the time. Humans continued to maintain a nomadic lifestyle and gradually migrated into areas formerly covered by glaciers. More refined micro-lithic stone tool kits, the bow and arrow, and the beginnings of plant domestication developed in this period. As in the Paleolithic period, evidence of human occupation in the Mesolithic period has been recorded primarily in northern Armenia. For example, an archaeological survey conducted in the southern Armeno-Javakhet volcanic plateau in north-western Armenia identified both Paleolithic and Mesolithic artefact assemblages⁴.

Neolithic Period

The Neolithic period was characterised by the emergence of fully sedentary lifestyles associated with the domestication of plants and animals. In Armenia, the earliest indications of human habitation have been uncovered in a cave, Areni-1, in southern Armenia. Areni-1 has yielded Chalcolithic and Early Bronze Age remains including urn burials, a leather skirt, the oldest known leather shoe, and the oldest winery recorded in the world⁵. The earliest systematically excavated agricultural settlements appear to belong to the Shulaveri-Shomu tepe culture of the Late Neolithic⁶. Between 6000 and 4200 BC, the Shulaveri-Shomu and other Neolithic/Chalcolithic cultures of the Southern Caucasus were using local obsidian for

³ Dolukhanov, Pavel, Stephen Aslanian, Evgeny Kolpakov & Elena Belyaeva. September 2004. "Prehistoric Sites in Northern Armenia". *Antiquity*. Vol. 078, Issue 301.

⁴ Eugen M. Kolpakov. 2009. "The Late Acheulian Site of Dashtadem-3 in Armenia". *PaleoAnthropology*. <http://www.paleoanthro.org/journal/content/PA20090003.pdf>

⁵ BBC. January 11, 2011. "[Oldest known wine-making facility' found in Armenia](http://www.bbc.co.uk/news/world-europe-12158341)". <http://www.bbc.co.uk/news/world-europe-12158341>

Dindar, Shereen. June 9, 2010. "World's Oldest Leather Shoe Found—Stunningly Preserved". *National Post*. <http://news.nationalpost.com/2010/06/09/worlds-oldest-leather-shoe-found-in-armenia-2/>

Owen, James. January 10, 2011. "Earliest Known Winery Found in Armenian Cave." *National Geographic*. <http://news.nationalgeographic.com/news/2011/01/110111-oldest-wine-press-making-winery-armenia-science-ucla/>

Ravilius, Kate. June 9, 2010. *National Geographic: World's Oldest Leather Shoe Found—Stunningly Preserved*. National Geographic News. <http://news.nationalgeographic.com/news/2010/06/100609-worlds-oldest-leather-shoe-armenia-science/>

⁶ Wilkinson, Keith N., Boris Gasparian, Ron Pinhasi, Pavel Avetisyan, Roman Hovsepyan, Diana Zardaryan, Gregory E. Arshian, Guy Bar-Oz & Alexia Smith. 2012. "Areni-1 Cave, Armenia: A Chalcolithic–Early Bronze Age settlement and ritual site in the southern Caucasus". *Journal of Field Archaeology*. Vol. 37, No. 1.

tools, raising animals such as cattle and pigs, and growing crops. Characteristic traits of the Shulaverian material culture include circular mud-brick architecture, pottery, anthropomorphic female figurines, and an obsidian industry with an emphasis on production of long prismatic blades.

Bronze Age

A wide range of Bronze Age Kura-Araxes culture (4000 – 2200 BC) settlement site types have been investigated in southern Armenia. Site types include densely populated tepes (settlement mounds) located on the plains of river valleys (e.g., Mokhra Blur, Kyul Tepe 1, Khizanaant Gora, Kvatskhelebi, Yanik Tepe and Norsuntepe), as well as large low-density settlements with stone architecture found in high-elevation mountainous areas (e.g., Gora-Amiranis, Gegharot). Another regional Bronze Age culture, the Trialeti culture (2200 – 1500 BC) is characterized by its burial mounds, sometimes called kurgans or cromlechs. Also during the late Bronze Age, between 1500 and 1200 BC, the western part of the Armenian Highland was occupied by the Hayasa-Azzi culture which was frequently in conflict with the Anatolian-based Hittite Empire.

Iron Age

During the Iron Age, most of the Armenian Highland was united, first under a confederation of kingdoms, known as the Nairi (1200 – 800 BC) based in Anatolia. In the 10th century BC, the Nairi joined the Kingdom of Urartu (1000–600 BC), which became a powerful rival of the Assyrian empire in the first half of the 8th century BC. The Urartu had well-developed agricultural practices including irrigation, cultivating wheat, barley, sesame, millet and emmer. They also practiced horticulture and viticulture.

Antiquity

Around 600 BC, the Orontid Dynasty established the Kingdom of Armenia, which reached the peak of its power and integration with Hellenistic culture between 95 and 66 BC under Tigranes the Great. Following the rule of Tigranes the Great, Armenia was ruled by a series of foreign powers. During this time, after 20 BC, Armenia became a buffer zone and area of contention between the Parthian and the Roman empires. The Roman influence in Armenia resulted in it becoming a Roman province, although the period of Roman control was short-lived (AD 114–118). In AD 301, Armenia declared Christianity as its official state religion. Later in the fourth century, the Parthians attempted to wrest control of Armenia from the Byzantine Empire, resulting in a split of Armenia into East and West in AD 387. Western Armenia remained a province of the Byzantine Empire until AD 536 while Eastern Armenia remained a

kingdom within Parthian Empire until AD 646.

Middle Ages

The collapse of Byzantine and Persian control of Armenia in the late 7th century led to the rise of the Emirate of Armenia, also known as the Ostikanate of Arminiya or the Principality Armenia. The spread of Islam resulted in the collapse of both Byzantine and Parthian Persian control across the Near East and South Caucasus. During this period, Armenia emerged as an autonomous principality in the Umayyad Caliphate and was ruled by local princes from 637-885. During the subsequent collapse of the Umayyad Caliphate and rise of the Abbasid Caliphate in the late 9th century, Armenia gained full independence. The Kingdom of Armenia under the rule of King Ashot I of the Bagratuni Dynasty of Armenia was formally recognized by both the Byzantine Emperor and Abbasid Caliph in AD 884. The Kingdom of Armenia remained an independent kingdom until it was conquered by the Seljuk Turks in AD 1071. The Seljuk Turks controlled Armenia until the early 12th century. Armenia suffered invasions from the Mongols in the 1230's, followed by invasions by other Central Asian groups from the 13th to 15th centuries.

Period of Foreign Control

By the 16th century, Armenia was weakened from centuries of invasion. Between 1513 and 1737, the Ottoman Empire and Persia fought over and divided Armenia. After the Russo-Persian War (1826-1828), the parts of Armenia controlled by Persia, primarily in the East, were incorporated into Russia, while Western Armenia was held by the Ottoman Empire. In the early 20th century, during World War I, the Turkish government carried out a series of massacres which are now known as the Armenian Genocide, in which up to 1.5 million Armenians were systematically killed.

Modern Period

After World War I and the collapse of the Ottoman and Russian empires, Armenia finally regained independence as the Democratic Republic of Armenia in 1918. The newly independent Democratic Republic of Armenia was engaged in territorial wars with its neighbours Georgia (1918), Azerbaijan (1919-1920) and Turkey (1920). By 1922, the influence of communism had spread to Armenia and the newly-proclaimed Armenian Soviet Socialist Republic became part of the Soviet Union. Armenia remained part of the Soviet Union until the early 1990's, when it declared independence as the Soviet Union ceased to exist.

4.19.3 Field Investigations

Cultural Heritage field investigations employed surface reconnaissance and excavation. Field reconnaissance in the Project area was undertaken in stages beginning in 2010 and is continuing at present. Information in this baseline chapter is based on the following field efforts:

- Pedestrian field reconnaissance and test excavations conducted by an Armenian archaeological team for nine days from July 21 to 28, 2010;
- Pedestrian field reconnaissance and test excavations conducted by the Armenian team for five days from October 16 to 20, 2011;
- Pedestrian field reconnaissance by an Environmental Resource Management (ERM) archaeologist for 5 days from July 25 to 29, 2012. This included visits to known sites identified by the Armenian team and field reconnaissance of areas not previously covered by the Armenian team;
- Pedestrian field reconnaissance by an ERM archaeologist for 9 days from September 8 to 16, 2012; and
- Pedestrian field reconnaissance by an ERM archaeologist for 5 days from November 30 to December 4, 2012.
- Pedestrian field reconnaissance by an Armenian archaeological team for 10 days from October 4 to 14, 2013.
- Pedestrian field reconnaissance by an Armenian archaeological team in June 2014.
- Pedestrian field reconnaissance of a proposed water line realignment by an Armenian archaeological team in November 2015.

The above mentioned surveys included general reconnaissance, but also focused on specific Project components, some of which have been moved due to Project redesign.

Fieldwork Techniques: Surface Reconnaissance

Archaeologists conducted surface reconnaissance surveys of specific Project component areas looking for indications of archaeological remains. Surface reconnaissance is an efficient and frequently used archaeological technique for identifying sites that have substantial associated earthworks or the remains of ruined stone structures. As a part of this technique, the ground surface is scanned visually for artefacts especially in areas where the subsurface is exposed through erosion or other processes. Surface reconnaissance may not identify smaller sites with limited surface evidence such as campsites, activity areas and human burials which often have no above-ground indicators.

Potential site indicators documented within the Project area include suspicious rock piles; apparent artificial mounding of earth; gravestones; surface artefact scatters; and ruined architectural features such as walls or building foundations. Surface artefacts and sites with limited surface indicators were difficult to detect in most survey areas, as thick grass cover limited ground surface visibility.

Sites and potential site locations identified by surface reconnaissance were described briefly in field notebooks, photographed, and their locations recorded with hand-held GPS (geographic positioning system). In some instances, it was difficult to confirm whether certain features indicated the presence of an archaeological site; a modern agricultural structure, installation, or feature; or a natural feature. In these cases, different levels of “site potential” were assigned. Three levels of site potential are used: High Potential, Medium Potential Site, and Low Potential Site.

At present, the following current and former Project component footprints have been investigated by surface reconnaissance:

- Former Heap Leach Facility (HLF), Phase I Area (Site 14);
- Former Waste Dump Area (Site 13);
- Former HLF location (Site 6);
- Former access road through the Vorotan River Valley;
- Former proposed infrastructure areas 11, 12, and 19;
- Current HLF (Site 28) and associated facilities;
- Erato and Tigranes /Artavazdes mine pits;
- Barren Rock Storage Facility (BRSF) (Site 27) and associated facilities;
- ADR plant;
- Crusher platform;
- Conveyor corridor;
- Main access road; and
- A 3.5 km water pipeline alignment south of the HLF (Site 28).

The remaining Project component footprints, including access roads, laydown areas and construction camp, if required will be subject to future surface reconnaissance under commitments outlined in the Project’s Cultural Heritage Management Plan (Chapter 8).

Initially, the focus of the surface reconnaissance surveys was within the proposed footprints of Project components in the Vorotan River valley, specifically the initial location of the HLF, Site 6, and the originally planned construction access road from Gorayk. Due to the large number of cultural heritage sites identified in these areas as well as other environmental concerns, these proposed Project components were relocated out of the Vorotan Valley.

Fieldwork Techniques: Excavation

A sample of sites identified by surface reconnaissance was selectively excavated by the team of Armenian archaeologists. Excavation involved controlled removal and recording of soil, artefacts and structural remains from the sites. The specific excavation approach taken at each site depended on the size, depth and complexity of the site, but in general involved slow and careful, layered excavation with hand tools.

Typically, excavations were conducted in rectangular units several metres on a side (e.g. 2.5m x 3m.) and excavation layers were based on observed soil conditions at each site. Final excavation depth was no more than 1m. Excavations were recorded through field notes, sketches and scaled maps, and photography. Artefacts were retained for later study and potential public display. Excavated soil was manually culled for artefacts. In some cases, excavation revealed few or no artefacts, structures or other cultural information.

As with the surface reconnaissance, excavations that have informed the baseline environment also include the previous location for the Project's HLF, (known as Site 6), the initial route of the construction access road from Gorayk, and other proposed Project components that would have been located in the Vorotan River valley. Although, these areas are now no longer going to be disturbed, the data recovery contributes to mitigation of impacts, as these excavations have provided more insight into general archaeological patterns in the Project area, indicating preservation patterns. Excavations have allowed the Armenian archaeological team to assess subsurface conditions and resources more accurately than is possible based on surface indications alone. For example, after test excavation, some sites that had the appearance of Bronze Age burials from the surface proved not to be burials. Typical conditions at these "apparent" burials have been noted in order to avoid unnecessary efforts in the future.

4.19.4 Project Area Archaeological Finds

Fieldwork in the Amulsar Project area has identified a total of 487 potential cultural heritage

sites. The 487 potential sites are possible archaeological sites, confirmed archaeological sites, or living heritage sites. Some of the confirmed archaeological sites include ruined structures visible and partially preserved on the surface. Summary information is provided on each of the archaeological sites in Table 4.19.2, which includes ERM's judgement of the importance of each site, based on present evidence. The sites include:

- Earth and stone mounds of various sizes that may represent tombs from various periods, some potentially dating to the Bronze Age (3,400-1,500 BC);
- Cemeteries denoted by stone markers, some of them worked and/or inscribed, and mounded earth dated to the Middle Ages;
- Potential settlement sites dated to the Late Middle Ages indicated by ruined architecture on the surface;
- Prehistoric campsites and activity areas of pre-Bronze Age peoples, indicated by chipped and ground stone tools; and
- Living heritage sites including 20th century seasonal shepherd's camps with possible burials/cemeteries. The Armenian archaeological team identified some of these sites as belonging to ethnic Azeris.

A summary of the types of potential cultural heritage sites identified during surveys of proposed Project components is provided below. In most instances the site types assigned to each potential cultural heritage site have not been confirmed through any type of intrusive investigation and assigned site types remain provisional.

The Armenian archaeological team identified nine potential cultural heritage sites within the proposed Erato and Tigranes-Artavazdes mine pits. These sites have been provisionally identified as tomb hills, stone circles, and obsidian stone scatters. In addition to these nine potential sites, five potential sites were identified in the stockpile area to the northeast of the mine pits. Potential site types located within the stockpile footprints include stone circles/foundations and tombs.

A reconnaissance survey of the proposed HLF (Site 28) location was executed by the Armenian archaeological team over the course of 10 days from October 4 to 14, 2013 and as part of a waterline realignment survey conducted in November 2015. The survey area included the proposed new footprint of the HLF as well as the surrounding landscape. The survey team identified a total of 99 potential cultural heritage sites within the surveyed area. Fifty of these potential sites are located within or adjacent to the footprint of the HLF and nearby

facilities, and a further 45 potential sites within the disturbance footprint of the proposed facilities and an additional five potential sites within 50m. Provisional site types identified by the Armenian archaeological team include tombs, crypts, grave mounds or *kurgans*, wall fragments and stone structure foundations. Two additional potential sites were identified within the HLF footprint during the satellite imagery study of this area. These two sites were provisionally identified as potential tombs or burial mounds by the satellite imagery analyst.

Cultural heritage site CH-335 was identified by an ERM archaeologist during a November 2012 field reconnaissance survey of the former HLF location. Due to subsequent Project component realignments, the proposed conveyor corridor and main access road no longer pass through the surveyed area. CH-355 is a scatter of potsherds, obsidian flakes and obsidian tool fragments. The scatter of artefacts covers an area of approximately 3.1 hectares. A large number of stone piles created during agricultural field clearing were found within the artefact. These piles may represent the remains of prehistoric dry-laid-stone features associated with an archaeological site. Based on the recovery of potsherds, the site is dated to the Neolithic Period or later.

In January of 2014, ERM cultural heritage specialists conducted a satellite imagery analysis of the proposed locations of the BRSF, conveyor corridor, and main access road. This analysis identified 35 cultural heritage anomalies within and immediately adjacent to proposed Project component areas. Later, in June of 2014, the Armenian archaeological team conducted a pedestrian reconnaissance survey of these Project component areas. This survey was conducted to “ground truth” the cultural heritage anomalies identified by ERM as well as to survey for any additional potential sites not identified by the satellite imagery analysis. The alignment of the conveyor together with the footprint of mine infrastructure, including infrastructure close to the BRSF has been determined following a technical review of the Project. Therefore, in-field reconnaissance surveys have not been completed in all Project component areas. This has been identified in the Cultural Heritage Management Plan (Appendix 8.17).

A total of forty-two potential sites were identified by the Armenian archaeological team during a survey of the BRSF, conveyor corridor, and main access road areas, including 25 potential sites that were initially identified by the satellite imagery analysis. The remaining 17 cultural heritage anomalies were determined to represent the remains of 20th century farmsteads and animal corrals, or stone piles created by field clearing activities.

Potential archaeological site types identified by the Armenian team during these surveys included:

- A 19th-20th century structure and associated grave;
- An Eneolithic Period artefact scatter;
- Potential Bronze Age tombs and ritual sites;
- Structural ruins from seasonal, 20th century Azeri shepherd's camps including potential burials;
- A petroglyph image of a fish associated with the remains of a possible temple.

A total of 17 potential sites were determined to be within the disturbed area of BRSF, conveyor corridor, and main access roads, with an additional five potential sites located within 50m of the disturbed area.

4.19.5 Assessment of Archaeological Finds

A number of sites identified during the 2010 and 2011 reconnaissance surveys were re-visited to assess their potential cultural heritage sensitivity. Evaluation criteria for determining a site's sensitivity are presented in Chapter 6.16 and Table 6.16.2 of this document. In total, 138 of the 487 potential archaeological sites were assessed, resulting in the identification of:

- 4 very high importance sites;
- 27 high importance sites;
- 32 medium importance sites;
- 22 low importance sites; and
- 53 negligible importance sites.

Site locations and assessed sensitivities are shown in relation to planned Project components in Figure 4.19.1. The majority of the re-visited sites are located in the Vorotan River valley. Due to subsequent realignments to the Amulsar mine layout these sites are currently located outside the proposed development area. The site assessments conducted at the 138 re-visited sites did not identify any critical cultural heritage sites within the current Amulsar

Project footprint⁷ and disturbed area⁸. The scientific importance level of the remaining 349 sites will be assessed only if they are found to be located within the footprint of the Project components or within 50 m of proposed Project components. These assessments will be conducted during planned pre-construction phase reconnaissance surveys and archaeological evaluations.

In addition to the known and possible sites identified to date, there is a high likelihood for additional undiscovered archaeological resources in the Project area. Such newly discovered sites would most likely include the same types of sites already identified. Other types of archaeological sites may be present as suggested in the cultural context (Table 4.19.1). Other unknown sites are most likely to be situated in level, well-drained areas near permanent and semi-permanent water sources (rivers, streams, springs, etc.). Intact archaeological sites, of course, are more likely to be encountered in areas subject to stable depositional conditions or to soil accretion.

Figure 4.19.2 and Figure 4.19.3 include photographs of representative conditions in the Project area.

⁷ The Project footprint is defined as areas physically occupied by Project infrastructure, including roads and mine pits.

⁸ For the purposes of the cultural heritage baseline, the Project disturbed area is defined as any area in which significant ground disturbance will take place. This includes the Project footprint as well as adjacent areas disturbed as part of construction activities.

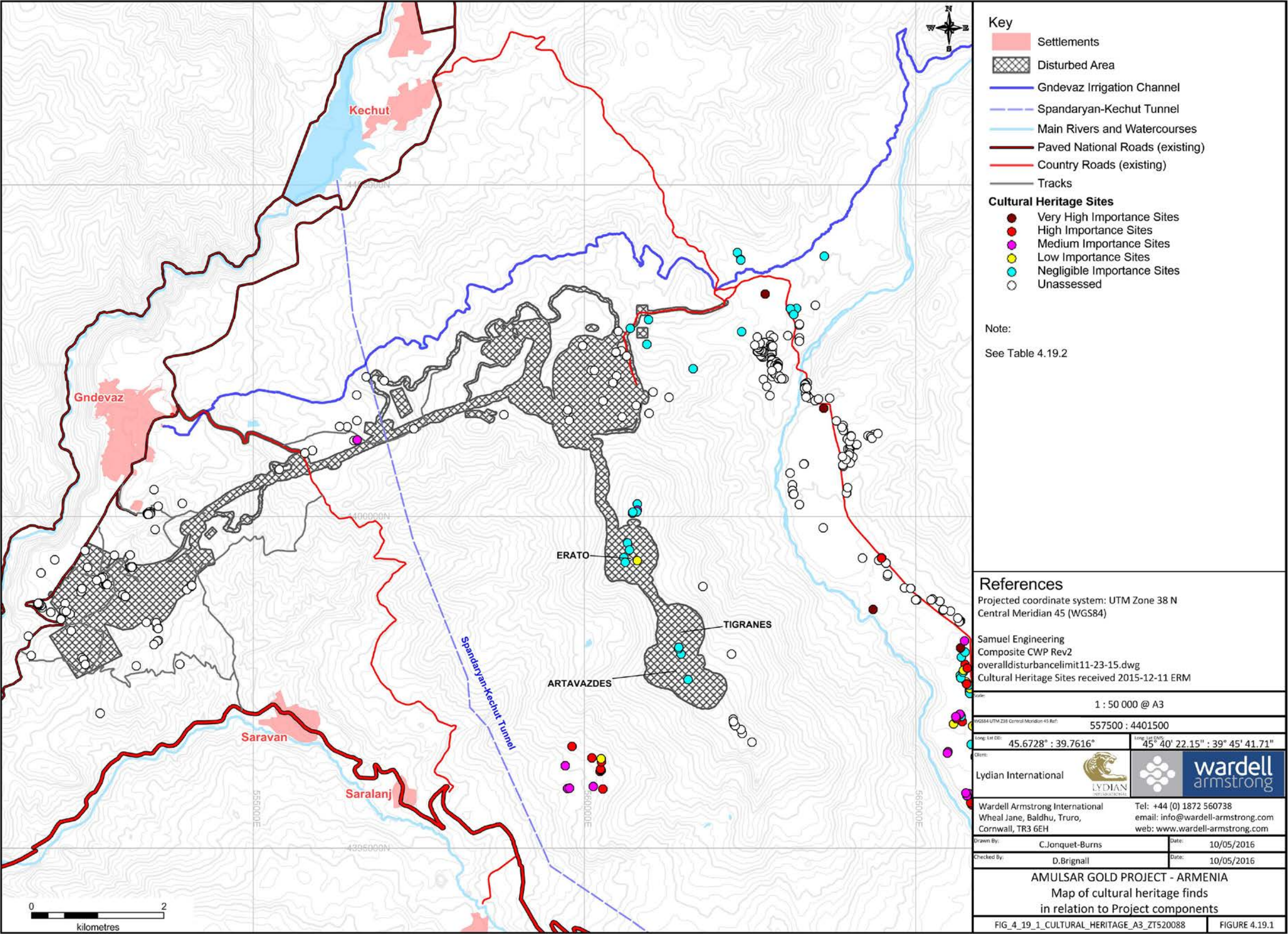


Figure 4.19.1: Map of cultural heritage finds in relation to Project components



Figure 4.19.2: Photographs of Archaeological Resources in the Project area

a. Possible Bronze Age Tomb (top), b. Stone Remains of Ancient Architecture (bottom)



Figure 4.19.3: Photographs of Project area Terrain

a. Rolling Topography on Valley Bottom, View to South (top), b. Mountain Topography, View to North (bottom)

4.19.6 Additional Post-Assessment Fieldwork

The ERM field effort referenced above was accomplished in coordination with the Armenian teams during the 2010-2014 archaeological field seasons. Additional fieldwork including more intensive reconnaissance, archaeological evaluation of potential sites, and archaeological data recovery excavations will be conducted by the Armenian archaeological team in coordination with ERM. The results of these efforts will be reported on more fully in subsequent Project documents. Additional reconnaissance and excavation is planned in the Project area, focusing on areas of planned ground disturbance (see Chapter 6 and 6.16).

Table 4.19.2 is colour coded to correspond with the site sensitivity colour labels presented in Figure 4.19.1. The following colours have been assigned to the various site sensitivity levels:

- Very High Sensitivity Sites: Purple;
- High Sensitivity Sites: Red;
- Medium Sensitivity Sites: Orange;
- Low Sensitivity Sites: Yellow;
- Negligible Sensitivity Sites: Blue; and
- Unassessed Sensitivity Sites: White.

Table 4.19.2: Listing of Archaeological Finds					
ESIA Site ID	Armenian NGO Site ID	Project Location	ERM Judgement of Importance	Armenian Archaeologist's Description	ERM Description
Site-1	82.4; 82.5	Solution Pond	Low	Goshabulag ancient rural settlement	Recent historic yet largely abandoned building. Late 19th-Early 20th century. The site is known as Goshabulag.
Site-2	84	HLF 6	Negligible	Tomb	Neither obvious, nor ambiguous site identifiers visible on surface.
Site-3	84.1	HLF 6	Negligible	The ruins of a wall	Neither obvious, nor ambiguous site identifiers visible on surface.
Site-4	84.2	HLF 6	Negligible	The ruins of a wall	Neither obvious, nor ambiguous site identifiers visible on surface.
Site-5	100.4	HLF 6	Negligible	Tomb	Neither obvious, nor ambiguous site identifiers visible on surface.
Site-6	100.3	HLF 6	Negligible	Tomb	Neither obvious, nor ambiguous site identifiers visible on surface.

Table 4.19.2: Listing of Archaeological Finds

ESIA Site ID	Armenian NGO Site ID	Project Location	ERM Judgement of Importance	Armenian Archaeologist's Description	ERM Description
Site-7	98	HLF 6	Negligible	Tomb Hill	Neither obvious, nor ambiguous site identifiers visible on surface.
Site-8	100.2	HLF 6	Negligible	Tomb	Neither obvious, nor ambiguous site identifiers visible on surface.
Site-9	100.1	HLF 6	Negligible	Tomb	Low potential for being a cultural site. Neither obvious, nor ambiguous site identifiers visible on surface.
Site-10	100	HLF 6	Negligible	Tomb	Low potential for being a cultural site. Neither obvious, nor ambiguous site identifiers visible on surface.
Site-11	99	HLF 6	Medium	Tomb	A potential small burial mound, possible Kurgan, marked by a clustering of field stones.
Site-12	82.3	HLF 6	Negligible	The ruins of walls	Neither obvious, nor ambiguous site identifiers visible on surface.
Site-13	85	300m East HLF 6	Negligible	Tomb	Neither obvious, nor ambiguous site identifiers visible on surface.
Site-14	84.3	35m East HLF 6	Negligible	Rock	Neither obvious, nor ambiguous site identifiers visible on surface.
Site-15	85.1; 85.2	400m East HLF 6	Uncertain, Not Visited	Muslim Graves/The Ruins of Walls	-
Site-16	82.2	HLF 6	Negligible	Observation tower	Neither obvious, nor ambiguous site identifiers visible on surface
Site-17	NA	HLF 6	Medium	-	Potential burial mound, possible Kurgan, atop natural rise 200 m NW of guard station. Dense concentration of small field stones acting as seal-stones.
Site-18	81.1; 82; 82.1	HLF 6	Low	Tomb	Surface identifiers are ambiguous. Could either be natural concentration of small field stones or perhaps a small grave site.

Table 4.19.2: Listing of Archaeological Finds

ESIA Site ID	Armenian NGO Site ID	Project Location	ERM Judgement of Importance	Armenian Archaeologist's Description	ERM Description
Site-19	NA	HLF 6	High	-	Potential burial mound, possible Kurgan. Small, less than 10 m across and 75 cm high.
Site-20	NA	HLF 6	High	-	Large graveyard with 2 Early Christian/Islamic carved grave stones.
Site-21	81	HLF 6	Low	Tomb	Medium Potential for being a cultural site. Surface identifiers are ambiguous. Just seems to be a natural low concentration of small field stones
Site-22	85.3	900m East HLF 6	Uncertain, Not Visited	Stone Piles	-
Site-23	86; 86.1	850m East HLF 6	Uncertain, Not Visited	Tomb/The Ruins of Walls	-
Site-24	97.1	HLF 6	Low	Tomb	Surface identifiers are ambiguous. Could either be natural low concentration of small field stones or perhaps a small prehistoric grave site.
Site-25	80.1	HLF 6	Negligible	Stone Piles	Neither obvious, nor ambiguous site identifiers visible on surface
Site-26	86.2	950m East HLF 6	Uncertain, Not Visited	Tomb	-
Site-27	87	750m East HLF 6	Uncertain, Not Visited	Tomb	-
Site-28	87.1	700m East HLF 6	Uncertain, Not Visited	Pile of Stones	-
Site-29	79.1; 80	HLF 6	Low	Tomb and the Ruins of Walls	Surface identifiers are ambiguous. Likely modern stone gathering from agricultural activity and/or modern field wall.
Site-30	78.2; 79	HLF 6	Low	Tomb and Stone Piles	Surface identifiers are ambiguous.
Site-31	75.1; 76	HLF 6	High	Tomb	Potential stone lined/filled grave.
Site-32	87.2	700m East HLF 6	Uncertain, Not Visited	Stone Piles	-

Table 4.19.2: Listing of Archaeological Finds

ESIA Site ID	Armenian NGO Site ID	Project Location	ERM Judgement of Importance	Armenian Archaeologist's Description	ERM Description
Site-33	75	HLF 6	Negligible	Tomb	Low potential for being a cultural site. Neither obvious, nor ambiguous site identifiers visible on surface
Site-34	74	HLF 6	Medium	Tomb Hill	Large potential burial mound, possible Kurgan. A large and deep trench has been dug into the middle of it.
Site-35	78; 78.1	HLF 6	Low	Tomb and Stone Piles	Surface identifiers are ambiguous.
Site-36	77	HLF 6	Negligible	Tomb	Neither obvious, nor ambiguous site identifiers visible on surface.
Site-37	71; 72; 72.1; 73	HLF 6	Negligible	Tomb and Stone Piles	Neither obvious, nor ambiguous site identifiers visible on surface.
Site-38	70	HLF 6	Low	Tomb	Medium Potential for being a cultural site. Surface identifiers are ambiguous. It is likely it is just a modern field wall.
Site-39	69	HLF 6	Low	Tomb	Medium Potential for being a cultural site. Surface identifiers are ambiguous. It is likely a modern pile of field stones.
Site-40	68	HLF 6	Negligible	Tomb	Low potential for being a cultural site. Neither obvious, nor ambiguous site identifiers visible on surface.
Site-41	-	HLF 6 Ext	High	-	Stone lined/filled grave. Old Lichen growth on stones. Possibly prehistoric.
Site-42	89	HLF 6 Ext	High	Tomb Hill	Stone circle, possibly associated with an adjacent potential burial mound, possible Kurgan, and potentially part of a larger site.
Site-43	-	HLF 6 Ext	High	-	Potential burial mound, possible Kurgan. Possibly part of a larger site.
Site-44	67.5	HLF 6 Ext	Low	Stone Piles	Surface identifiers are ambiguous. It is likely just a pile of modern field stones.

Table 4.19.2: Listing of Archaeological Finds

ESIA Site ID	Armenian NGO Site ID	Project Location	ERM Judgement of Importance	Armenian Archaeologist's Description	ERM Description
Site-45	87.3; 88	5m East HLF 6 Ext	High	Tomb	Foundations of a stone building, potentially historic or ancient. Possibly part of a larger site.
Site-46	67.4	HLF 6 Ext	Negligible	Stone Piles	Neither obvious, nor ambiguous site identifiers visible on surface.
Site-47	67.3	HLF 6 Ext	Negligible	Tomb	Neither obvious, nor ambiguous site identifiers visible on surface.
Site-48	90	HLF 6 Ext	Medium	Tomb	Surface identifiers are ambiguous. Could either be natural concentration of small field stones, modern agricultural stone pile, or a potential small grave site.
Site-49	67.2	HLF 6 Ext	Negligible	Tomb	Neither obvious, nor ambiguous site identifiers visible on surface
Site-50	91	5m East HLF 6 Ext	High	Tomb Hill	Potential burial mound, possible Kurgan. Possibly part of a larger site.
Site-51	67; 67.1	HLF 6 Ext	Low	Tomb	Medium Potential for being a cultural site. Surface identifiers are ambiguous. It is likely just a pile of modern field stones.
Site-52	92	50m East HLF 6 Ext	Uncertain, Not Visited	Tomb Hill	-
Site-53	-	HLF 6 Ext	High	-	Possible stone lined/filled grave.
Site-54	93	150m East HLF 6 Ext	Uncertain, Not Visited	Tomb Hill	-
Site-55	96; 97	HLF 6 Ext	Medium	Tomb	Surface identifiers are ambiguous. Could either be natural low concentration of small field stones or perhaps a small grave site.
Site-56	95	HLF 6 Ext	Medium	Tomb	Surface identifiers are ambiguous. Could either be natural low concentration of small field stones or perhaps a small grave site.
Site-57	66; 66.1	HLF 6 Ext	High	Tomb	Potential stone lined/filled grave.

Table 4.19.2: Listing of Archaeological Finds

ESIA Site ID	Armenian NGO Site ID	Project Location	ERM Judgement of Importance	Armenian Archaeologist's Description	ERM Description
Site-58	93.1	150m East HLF 6 Ext	Uncertain, Not Visited	The Ruins of Walls	-
Site-59	94	150m East HLF 6 Ext	Uncertain, Not Visited	Tomb	-
Site-60	65.2	HLF 6 Ext	Negligible	Obsidian Tools	Low potential for being a cultural site. Neither obvious, nor ambiguous site identifiers visible on surface. Did not find any obsidian.
Site-61	65.1	HLF 6 Ext	Negligible	Tomb	Low potential for being a cultural site. Neither obvious, nor ambiguous site identifiers visible on surface.
Site-62	62	5m north of HLF 6 Ext	Very High	Kurgan	Kurgan that is currently being excavated. Was thought to lie within previous Project Area of Disturbance (HLF site 6), but in fact does not.
Site-63	-	Just East HLF 6 Ext	Low	-	A clustering of historical rural structures. Probably early 20th Century
Site-64	63; 63.2; 63.1; 64	35m north of HLF 6 Ext	Medium	Tomb and Tomb hill	Settlement with possible grave dated to the Middle Ages. Currently being excavated.
Site-65	-	200m North of Former Conveyor Belt	Very High	-	Very large potential settlement defined by a series of large wall complexes on multiple levels and possible domestic structures. Possible occupations dating from the Neolithic through Antique periods.
Site-66	41; 41.2; 42; 42.1; 44; 45; 45.1; 46; 47; 48; 48.1; 49	Construction Access Road	Very High	Tomb and Tomb Hill and stone piles	Cultural mound, not a tomb, with rectilinear architecture. Located north of potential ancient settlement upon the river. Architectural remains visible atop of mound used bedrock as its southern wall. Circular/apsidal foundation identified. Undetermined age but likely ancient

Table 4.19.2: Listing of Archaeological Finds

ESIA Site ID	Armenian NGO Site ID	Project Location	ERM Judgement of Importance	Armenian Archaeologist's Description	ERM Description
Site-67	36; 37; 38; 39; 40; 41; 42; 43; 44; 45; 45.1; 46; 47; 48; 49; 50; 51; 52; 53; 56; 73; 74; 75	Construction Access Road	Very High	Tomb and Tomb Hill	A potential very large necropolis containing a burial mound (possible Kurgan) and early Christian and Muslim graves. A dense Kurganfield of multiple potential burial mounds located on the southern edge of the site appear to have been heavily disturbed by an existing pipeline.
Site-68	58	South of Site 11	Negligible	Lodging	Neither obvious, nor ambiguous site identifiers visible on surface.
Site-69	60	South of Site 11	Negligible	Circular masonry made of massive stones?	Neither obvious, nor ambiguous site identifiers visible on surface.
Site-70	59	South of Site 11	Negligible	Ruins of walls	Neither obvious, nor ambiguous site identifiers visible on surface.
Site-71	69	Located within Site11	Negligible	Exposure 13	Pile of field stones removed from agricultural fields. Not an archaeological site. Confirmed by local herder consulted near this location.
Site-72	51.1; 52.1; 52.2; 52.3	Located just to the east of Site11	Negligible	Tomb	Bed rock, not a cultural feature.
Site-73	49.2; 49.3	Located just to the east of Site11	Low	Tomb	Possible stone lined/filled grave.
Site-74	49.1	Located just to the west of Site11	Negligible	Tomb	Bed rock, not a cultural feature.
Site-75	65; 66	Located 50m to the east of Site13	Negligible	Tomb	Bed rock, not a cultural feature.
Site-76	55	Within Site 13	Negligible	Circular Situated Rocks	Bed rock, not a cultural feature.
Site-77	1.1; 1.4; 1.5	Within Site 13	Negligible	Tomb, Stone Piles, Dwelling	Bed rock, not a cultural feature.
Site-78	1.3	Within Site 13	Negligible	Tomb	Bed rock, not a cultural feature.

Table 4.19.2: Listing of Archaeological Finds

ESIA Site ID	Armenian NGO Site ID	Project Location	ERM Judgement of Importance	Armenian Archaeologist's Description	ERM Description
Site-79	1; 1.2	Within Site 13	Negligible	Tomb Hill	Bed rock, not a cultural feature.
Site-80	13; 14	N Erato	Negligible	Tomb and Tomb Hill	Bed rock, not a cultural feature.
Site-81	12	N Erato	Medium	Tomb Hill	Potential collapsed burial mound, possible Kurgan.
Site-82	11	N Erato	Negligible	Tomb Hill	Bed rock, not a cultural feature.
Site-83a	10	N Erato	Negligible	Tomb Hill	Bed rock, not a cultural feature.
Site-83b	9	N Erato	Negligible	Tomb Hill	Bed rock, not a cultural feature.
Site-84	8	Erato	Negligible	Tomb Hill	Bed rock, not a cultural feature.
Site-85	4; 5; 6; 7	Erato	Negligible	Tomb Hill	Said to be a tomb. It is a concentration of rocks in what looks like to be a pit. In fact this type of bolder-in-pit is wide-spread across this side of Erato. Interpreted as a natural landscape feature.
Site-86	3	Erato	Negligible	Tomb Hill	Bed rock, not a cultural feature.
Site-87	1	Erato	Low	Stone Circle	Said to be a stone circle. Is actually a triangular feature made out of small field stones. Unclear if cultural or not. If cultural it likely represents a temporary structure. No associated artefacts found.
Site-88	2	Erato	Negligible	Tomb Hill	Bed rock, not a cultural feature.
Site-89	76	Artavazd	Negligible	Obsidian Fragments	Bed rock, not a cultural feature.
Site-90	77	Artavazd	Negligible	Stone Circle 1	Site of previous excavation, but looks like only bed rock was uncovered. Not a site.
Site-92	78	Artavazd	Negligible	Stone Circle 2	Bed rock, not a cultural feature
Site-93	79	Artavazd	Negligible	Stone Circle 3	Not a cultural feature.
Site-94	15	Topsoil Stockpiles	Uncertain, Not Visited	Tomb	-

Table 4.19.2: Listing of Archaeological Finds

ESIA Site ID	Armenian NGO Site ID	Project Location	ERM Judgement of Importance	Armenian Archaeologist's Description	ERM Description
Site-95	16	Topsoil Stockpiles	Uncertain, Not Visited	Tomb	-
Site-96	17	Topsoil Stockpiles	Uncertain, Not Visited	Tomb	-
Site-97	18	Topsoil Stockpiles	Uncertain, Not Visited	Tomb	-
Site-98	19	Topsoil Stockpiles	Uncertain, Not Visited	Tomb	-
Site-99	20	Topsoil Stockpiles	Uncertain, Not Visited	Tomb	-
Site-100	21	Topsoil Stockpiles	Uncertain, Not Visited	Tomb	-
Site-101	22	Topsoil Stockpiles	Uncertain, Not Visited	Tomb	-
Site-102	23	Topsoil Stockpiles	Uncertain, Not Visited	Tomb	-
Site-103	24	Topsoil Stockpiles	Uncertain, Not Visited	Tomb	-
Site-104	25	Topsoil Stockpiles	Uncertain, Not Visited	Tomb	-
Site-105	26	Topsoil Stockpiles	Uncertain, Not Visited	Tomb	-
Site-106	27	Topsoil Stockpiles	Uncertain, Not Visited	Tomb	-
Site-107	28	Topsoil Stockpiles	Uncertain, Not Visited	Tomb hill	-
Site-108	29	Topsoil Stockpiles	Uncertain, Not Visited	Tomb hill	-
Site-109	30	Topsoil Stockpiles	Uncertain, Not Visited	Mound	-
Site-110	31	Topsoil Stockpiles	Uncertain, Not Visited	Tomb hill	-
Site-111	32	Topsoil Stockpiles	Uncertain, Not Visited	Tomb	-
Site-112	33	Topsoil Stockpiles	Uncertain, Not Visited	Tomb	-
Site-113	34	Topsoil Stockpiles	Uncertain, Not Visited	Tomb hill	-
Site-114	35	Topsoil Stockpiles	Uncertain, Not Visited	Tomb	-
Site-115	54	HLF 13	Uncertain, Not Visited	Tertadral rock ledler	-
Site-116	57	HLF 11	Uncertain, Not Visited	Late middle ages cemetery	-

Table 4.19.2: Listing of Archaeological Finds

ESIA Site ID	Armenian NGO Site ID	Project Location	ERM Judgement of Importance	Armenian Archaeologist's Description	ERM Description
Site-117	61	HLF 11	Uncertain, Not Visited	Tomb 9	-
Site-118	62	HLF 11	Uncertain, Not Visited	Footprints of massive and small stone masonry?	-
Site-119	63	HLF 11	Uncertain, Not Visited	Tombs	-
Site-120	64	HLF 11	Uncertain, Not Visited	Stone gatherings?	-
Site-121	67	HLF 11	Uncertain, Not Visited	Tomb 1	-
Site-122	68	Topsoil Stockpiles	Uncertain, Not Visited	Exposure 12	-
Site-123	70	Topsoil Stockpiles	Uncertain, Not Visited	Tomb hill	-
Site-124	71	HLF 11	Uncertain, Not Visited	Tomb	-
Site-125	72	HLF 11	Uncertain, Not Visited	Southern border of the necropolis	-
Site-126	80	Parandzem	Uncertain, Not Visited	Roofing slabs?	-
Site-127	81	Parandzem	Uncertain, Not Visited	Tomb - stone box	-
Site-128	82	Parandzem	Uncertain, Not Visited	Tomb hill with stone circle	-
Site-129	83	Arshak	Uncertain, Not Visited	Stone circle?	-
Site-130	84	Arshak	Uncertain, Not Visited	Stone circle with a roofing slab in the center	-
Site-131	85	Arshak	Uncertain, Not Visited	Tomb hill with stone circle	-
Site-132	86	Arshak	Uncertain, Not Visited	Tomb hill with stone circle (?)	-
Site-133	87	Arshak	Uncertain, Not Visited	Tomb hill	-
Site-134	88	Tigranes	Uncertain, Not Visited	Obsidian tool - spear edge	-
Site-135	1.6	HLF 12	Uncertain, Not Visited	Ceramic finding	-
Site-136	2	HLF 12	Uncertain, Not Visited	Tomb hill	-

Table 4.19.2: Listing of Archaeological Finds

ESIA Site ID	Armenian NGO Site ID	Project Location	ERM Judgement of Importance	Armenian Archaeologist's Description	ERM Description
Site-137	2.1	HLF 12	Uncertain, Not Visited	Rock	-
Site-138	3	HLF 12	Uncertain, Not Visited	Tomb hill	-
Site-139	4	HLF 12	Uncertain, Not Visited	Tomb hill	-
Site-140	5	HLF 12	Uncertain, Not Visited	Stone basket	-
Site-141	6	HLF 12	Uncertain, Not Visited	Tomb	-
Site-142	6.1	HLF 12	Uncertain, Not Visited	Stone piles	-
Site-143	7	HLF 12	Uncertain, Not Visited	Tomb hill	-
Site-144	8	HLF 12	Uncertain, Not Visited	Tomb	-
Site-145	9	HLF 12	Uncertain, Not Visited	Tomb hill	-
Site-146	10	HLF 12	Uncertain, Not Visited	Tomb	-
Site-147	10.1	HLF 12	Uncertain, Not Visited	Tomb	-
Site-148	10.2	HLF 12	Uncertain, Not Visited	Tomb	-
Site-149	11	HLF 12	Uncertain, Not Visited	Tomb hill	-
Site-150	11.1	HLF 12	Uncertain, Not Visited	Tomb	-
Site-151	12	HLF 12	Uncertain, Not Visited	Tomb	-
Site-152	13	HLF 12	Uncertain, Not Visited	Tomb	-
Site-153	14	HLF 12	Uncertain, Not Visited	Tomb hill	-
Site-154	15	HLF 12	Uncertain, Not Visited	Tomb	-
Site-155	16	HLF 12	Uncertain, Not Visited	Tomb hill	-
Site-156	17	HLF 12	Uncertain, Not Visited	Tomb	-
Site-157	18	HLF 12	Uncertain, Not Visited	Dwelling	-
Site-158	18.1	HLF 12	Uncertain, Not Visited	Tomb	-

Table 4.19.2: Listing of Archaeological Finds

ESIA Site ID	Armenian NGO Site ID	Project Location	ERM Judgement of Importance	Armenian Archaeologist's Description	ERM Description
Site-159	18.2	HLF 12	Uncertain, Not Visited	The ruins of a wall	-
Site-160	18.3	HLF 12	Uncertain, Not Visited	Obsidian tools	-
Site-161	18.4	HLF 12	Uncertain, Not Visited	Tomb	-
Site-162	19	HLF 12	Uncertain, Not Visited	Tomb	-
Site-163	20	HLF 12	Uncertain, Not Visited	Tomb	-
Site-164	21	HLF 12	Uncertain, Not Visited	Tomb	-
Site-165	22	HLF 12	Uncertain, Not Visited	Tomb	-
Site-166	23	HLF 12	Uncertain, Not Visited	Tomb hill	-
Site-167	23.1	HLF 12	Uncertain, Not Visited	Stone piles	-
Site-168	23.2	HLF 12	Uncertain, Not Visited	Stone piles	-
Site-169	24	HLF 12	Uncertain, Not Visited	Tomb hill	-
Site-170	25	HLF 12	Uncertain, Not Visited	Tomb	-
Site-171	26	HLF 12	Uncertain, Not Visited	Tomb	-
Site-172	27	HLF 12	Uncertain, Not Visited	Tomb	-
Site-173	28	HLF 12	Uncertain, Not Visited	Tomb	-
Site-174	28.1	HLF 12	Uncertain, Not Visited	Dwelling	-
Site-175	29	HLF 12	Uncertain, Not Visited	Tomb hill	-
Site-176	30	HLF 12	Uncertain, Not Visited	Tomb	-
Site-177	31	HLF 12	Uncertain, Not Visited	Tomb	-
Site-178	32	HLF 12	Uncertain, Not Visited	Tomb	-
Site-179	33	HLF 12	Uncertain, Not Visited	Tomb	-
Site-180	34	HLF 12	Uncertain, Not Visited	Tomb	-

Table 4.19.2: Listing of Archaeological Finds

ESIA Site ID	Armenian NGO Site ID	Project Location	ERM Judgement of Importance	Armenian Archaeologist's Description	ERM Description
Site-181	35	HLF 12	Uncertain, Not Visited	Tomb	-
Site-182	35.1	HLF 12	Uncertain, Not Visited	Tomb	-
Site-183	36	HLF 12	Uncertain, Not Visited	Tomb	-
Site-184	36.1	HLF 12	Uncertain, Not Visited	Tomb	-
Site-185	36.2	HLF 12	Uncertain, Not Visited	Tomb	-
Site-186	37	HLF 12	Uncertain, Not Visited	Tomb hill	-
Site-187	38	HLF 12	Uncertain, Not Visited	Tomb	-
Site-188	39	HLF 12	Uncertain, Not Visited	Tomb	-
Site-189	40	HLF 12	Uncertain, Not Visited	Tomb hill	-
Site-190	40.1	HLF 12	Uncertain, Not Visited	Tomb	-
Site-191	41	HLF 12	Uncertain, Not Visited	Tomb hill	-
Site-192	41	HLF 12	Uncertain, Not Visited	Tomb hill	-
Site-193	41.1	HLF 12	Uncertain, Not Visited	Tomb	-
Site-194	41.2	HLF 12	Uncertain, Not Visited	Tomb	-
Site-195	42	HLF 12	Uncertain, Not Visited	Tomb	-
Site-196	42.1	HLF 12	Uncertain, Not Visited	Tomb	-
Site-197	43	HLF 12	Uncertain, Not Visited	Tomb	-
Site-198	50	HLF 12	Uncertain, Not Visited	Tomb	-
Site-199	50.1	HLF 12	Uncertain, Not Visited	Tomb	-
Site-200	50.2	HLF 12	Uncertain, Not Visited	Stone piles	-
Site-201	50.3	HLF 12	Uncertain, Not Visited	Stone piles	-
Site-202	51	HLF 12	Uncertain, Not Visited	Tomb	-

Table 4.19.2: Listing of Archaeological Finds

ESIA Site ID	Armenian NGO Site ID	Project Location	ERM Judgement of Importance	Armenian Archaeologist's Description	ERM Description
Site-203	52	HLF 12	Uncertain, Not Visited	Tomb	-
Site-204	52.1	HLF 12	Uncertain, Not Visited	Stone piles	-
Site-205	52.2	HLF 12	Uncertain, Not Visited	Stone piles	-
Site-206	53	HLF 12	Uncertain, Not Visited	Tomb	-
Site-207	54	HLF 12	Uncertain, Not Visited	Tomb	-
Site-208	54.1	HLF 12	Uncertain, Not Visited	Stone piles	-
Site-209	54.2	HLF 12	Uncertain, Not Visited	Tomb	-
Site-210	54.3	HLF 12	Uncertain, Not Visited	Tomb	-
Site-211	54.4	HLF 12	Uncertain, Not Visited	Muslim tomb stone	-
Site-212	55	HLF 12	Uncertain, Not Visited	Tomb	-
Site-213	56	HLF 12	Uncertain, Not Visited	Tomb	-
Site-214	57	HLF 12	Uncertain, Not Visited	Tomb	-
Site-215	57.1	HLF 12	Uncertain, Not Visited	Muslim graves	-
Site-216	57.2	HLF 12	Uncertain, Not Visited	Tomb hill	-
Site-217	58	HLF 12	Uncertain, Not Visited	Tomb	-
Site-218	59	HLF 12	Uncertain, Not Visited	Tomb	-
Site-219	59.1	HLF 12	Uncertain, Not Visited	Tomb	-
Site-220	59.2	HLF 12	Uncertain, Not Visited	Tomb	-
Site-221	59.3	HLF 12	Uncertain, Not Visited	Stone piles	-
Site-222	59.4	HLF 12	Uncertain, Not Visited	Obsidian tools	-
Site-223	60	HLF 12	Uncertain, Not Visited	Tomb	-
Site-224	60.1	HLF 12	Uncertain, Not Visited	Stone piles	-

Table 4.19.2: Listing of Archaeological Finds

ESIA Site ID	Armenian NGO Site ID	Project Location	ERM Judgement of Importance	Armenian Archaeologist's Description	ERM Description
Site-225	61	HLF 12	Uncertain, Not Visited	Tomb	-
Site-226	61.1	HLF 12	Uncertain, Not Visited	The ruins of a walls	-
Site-227	61.2	HLF 12	Uncertain, Not Visited	Tomb	-
Site-228	61.3	HLF 12	Uncertain, Not Visited	Tomb	-
Site-229	61.4	HLF 12	Uncertain, Not Visited	Tomb	-
Site-230	83	HLF 6	Uncertain, Not Visited	Tomb	-
Site-231	101	HLF 12	Uncertain, Not Visited	Tomb	-
Site-232	102	HLF 12	Uncertain, Not Visited	Tomb	-
Site-233	103	HLF 12	Uncertain, Not Visited	Tomb	-
Site-234	104	HLF 12	Uncertain, Not Visited	Tomb	-
Site-235	104.1	HLF 12	Uncertain, Not Visited	Ceramic finding	-
Site-236	105	HLF 12	Uncertain, Not Visited	Tomb	-
Site-237	105.1	HLF 12	Uncertain, Not Visited	The ruins of a wall	-
Site-238	105.2	HLF 12	Uncertain, Not Visited	Dwelling	-
Site-239	106	HLF 12	Uncertain, Not Visited	Tomb	-
Site-240	106.1	HLF 12	Uncertain, Not Visited	Tomb	-
Site-241	106.2	HLF 12	Uncertain, Not Visited	Ceramic finding	-
Site-242	107	HLF 12	Uncertain, Not Visited	Tomb	-
Site-243	108	HLF 12	Uncertain, Not Visited	Tomb	-
Site-244	109	HLF 12	Uncertain, Not Visited	Tomb	-
Site-245	110	HLF 12	Uncertain, Not Visited	Tomb	-
Site-246	111	HLF 12	Uncertain, Not Visited	Tomb	-

Table 4.19.2: Listing of Archaeological Finds

ESIA Site ID	Armenian NGO Site ID	Project Location	ERM Judgement of Importance	Armenian Archaeologist's Description	ERM Description
Site-247	112	HLF 12	Uncertain, Not Visited	Tomb	-
Site-248	113	HLF 12	Uncertain, Not Visited	Tomb	-
Site-249	113.1	HLF 12	Uncertain, Not Visited	Tomb	-
Site-250	114	HLF 12	Uncertain, Not Visited	Tomb	-
Site-251	114.1	HLF 12	Uncertain, Not Visited	Tomb	-
Site-252	114.2	HLF 12	Uncertain, Not Visited	Tomb	-
Site-253	115	HLF 12	Uncertain, Not Visited	Tomb hill	-
Site-254	115.1	HLF 12	Uncertain, Not Visited	Tomb	-
Site-255	116	HLF 12	Uncertain, Not Visited	Tomb	-
Site-256	117	HLF 12	Uncertain, Not Visited	Tomb hill	-
Site-257	118	HLF 12	Uncertain, Not Visited	Tomb hill	-
Site-258	119	HLF 12	Uncertain, Not Visited	Tomb	-
Site-259	120	HLF 12	Uncertain, Not Visited	Tomb	-
Site-260	120.1	HLF 12	Uncertain, Not Visited	Tomb	-
Site-261	120.2	HLF 12	Uncertain, Not Visited	Tomb	-
Site-262	120.3	HLF 12	Uncertain, Not Visited	Tomb	-
Site-263	120.4	HLF 12	Uncertain, Not Visited	Tomb	-
Site-264	120.5	HLF 12	Uncertain, Not Visited	Ceramic finding	-
Site-265	121	HLF 12	Uncertain, Not Visited	Tomb hill	-
Site-266	122	HLF 12	Uncertain, Not Visited	Tomb hill	-
Site-267	123	HLF 12	Uncertain, Not Visited	Tomb	-
Site-268	123.1	HLF 12	Uncertain, Not Visited	Tomb	-

Table 4.19.2: Listing of Archaeological Finds

ESIA Site ID	Armenian NGO Site ID	Project Location	ERM Judgement of Importance	Armenian Archaeologist's Description	ERM Description
Site-269	123.2	HLF 12	Uncertain, Not Visited	Tomb	-
Site-270	123.3	HLF 12	Uncertain, Not Visited	Rock	-
Site-271	124	HLF 12	Uncertain, Not Visited	Tomb	-
Site-272	125	HLF 12	Uncertain, Not Visited	Tomb hill	-
Site-273	125.1	HLF 12	Uncertain, Not Visited	Tomb	-
Site-274	125.2	HLF 12	Uncertain, Not Visited	Tomb	-
Site-275	125.3	HLF 12	Uncertain, Not Visited	Tomb	-
Site-276	125.3	HLF 12	Uncertain, Not Visited	Tomb	-
Site-277	125.4	HLF 12	Uncertain, Not Visited	Tomb	-
Site-278	Not Defined	HLF 6	Negligible	Possible Tomb	Excavated but nothing found.
Site-279	Not Defined	HLF 6	Negligible	Possible Tomb	Not a site.
Site-280	Not Defined	HLF 6	Negligible	Ancient Rock Art	A few stones with markings. Inconclusive.
Site-281	Not Defined	HLF 6	Medium	Tomb	Possible tomb or cromlech
Site-282	Not Defined	HLF 6	High	Tomb	Potential large burial mound, possible kurgan with 5 associated smaller mounds or cromlechs. Many obsidian stone tools and early bronze age black burnished ceramics
Site-283	Not Defined	HLF 6	Low	Tomb	Looted grave. Found some carnelian, faience and bone beads. Could have surrounding cromlechs
Site-284	Not Defined	HLF 6	Low	Tomb	Possible tomb.
Site-285	Not Defined	Solution Pond	High	Tomb	Possible large round cromlech. Well preserved. Two series of concentric circles. Exists next to a large wall with two courses.
Site-286	Not Defined	Solution Pond	Medium	Tomb	Obsidian tools and bronze tools, unclear if a grave
Site-287	Not Defined	HLF 6	High	Acheulian Tools	Location of acheulian tool.
Site-288	Not Defined	HLF 6	Low	Stone Tools	Large wall where about 50 obsidian tools were found.

Table 4.19.2: Listing of Archaeological Finds

ESIA Site ID	Armenian NGO Site ID	Project Location	ERM Judgement of Importance	Armenian Archaeologist's Description	ERM Description
Site-289	Not Defined	HLF 6	High	Acheulian Tools	Location of three Acheulian handaxes.
Site-290	Not Defined	HLF 6	Negligible	Acheulian Tools	A trench that was dug to look for obsidian and Acheulian tools (ERM is unsure if this is a site).
Site-291	Not Defined	HLF 6	Negligible	Stone Tools	Site turned up very few natural obsidian chunks.
Site-292	Not Defined	HLF 6	Negligible	-	Just testing nothing found
Site-293	Not Defined	HLF 6	Negligible	Stone Tools	A few pieces of obsidian shatter. When obsidian pieces encountered during in-field assessment appeared to be natural shatter.
Site-294	Not Defined	HLF 6	Low	Possible Tomb	Found a few medieval ceramics and obsidian fragments.
Site-295	Not Defined	50m East of previous storm water pond location.	Medium	Tomb	Potential grave
Site-296	Not Defined	50m East of Stormwater Pond	Medium	Tomb	Possible grave
Site-297	Not Defined	50m East of Stormwater Pond	Medium	Tomb	Possible grave
Site-298	Not Defined	50m East of Stormwater Pond	Medium	Tomb	Possible grave or cromlech
Site-299	Not Defined	50m East of Stormwater Pond	Medium	Tomb	Possible cromlech
Site-300	Not Defined	50m East of Stormwater Pond	Medium	Tomb	Possible cromlech
Site-301	Not Defined	Stormwater Pond	Medium	Tomb	Possible triangular cromlech
Site-302	Not Defined	ARD Plant	Medium	Tomb	Possible cromlech
Site-303	Not Defined	ARD Plant	Medium	Tomb	Possible cromlech

Table 4.19.2: Listing of Archaeological Finds

ESIA Site ID	Armenian NGO Site ID	Project Location	ERM Judgement of Importance	Armenian Archaeologist's Description	ERM Description
Site-304	Not Defined	HLF 6	Medium	Tomb	Possible tomb currently under excavation. Bronze Age and Iron Age ceramics, obsidian tool, cow/horse bones (2).
Site-305	Not Defined	HLF 6	High	Tomb	Cromlech, currently under excavation.
Site-306	Not Defined	HLF 6	Low	Tomb	Potential grave, but very low potential. There is bed rock here. The only indication is a circular berry bush growing on top of this. But probably best left for chance finds.
Site-307	Not Defined	HLF 6	Low	Tomb	Possible 2 cromlechs, but not very convincing. Maybe part of the site just to the east
Site-308	Not Defined	Former Conveyor Belt	High	Tomb	Large potential burial mound, possible kurgan, located outside of impact area.
Site-309	Not Defined	Former Conveyor Belt	High	Tomb	Possible large cromlech. Should be avoided
Site-310	Not Defined	Former Conveyor Belt	Medium	-	Possible small grave
Site-311	Not Defined	Former Conveyor Belt	Medium	-	Possible small grave just to west of conveyor belt
Site-312	Not Defined	Former Conveyor Belt	Medium	-	Possible small grave to west of conveyor belt
Site-313	Not Defined	Former Conveyor Belt	Medium	-	Possible small grave to west of conveyor belt
Site-314	Not Defined	Former Conveyor Belt	Medium	-	Possible kurgan/cromlech.
Site-315	Not Defined	Former Conveyor Belt	Medium	-	Possible smaller cromlech
Site-316	Not Defined	HLF 6	Low	-	Possible small grave.
Site-317	Not Defined	HLF 6	High	-	Possible large stone tomb/cromlech
Site-318	Not Defined	HLF 6	Medium	-	Potential small tomb

Table 4.19.2: Listing of Archaeological Finds

ESIA Site ID	Armenian NGO Site ID	Project Location	ERM Judgement of Importance	Armenian Archaeologist's Description	ERM Description
Site-319	Not Defined	100 meters east of Site 12	High	-	Muslim cemetery
Site-322	Not Defined	Site-19	Medium	-	Possible cromlech
Site-323	Not Defined	Site-19	Medium	-	Possible cromlech
Site-324	Not Defined	Site-19	Medium	-	Possible cromlech
Site-325	Not Defined	Site-19	High	-	Potential large burial mound, possible kurgan situated above a settlement site.
Site-326	Not Defined	Site-19	High	-	Stone structure, possible house.
Site-327	Not Defined	Site-19	High	-	Stone circle
Site-328	Not Defined	Site-19	High	-	Stone structure
Site-329	Not Defined	Site-19	High	-	Stone circle
Site-330	Not Defined	Site-19	High	-	Stone structure, possible wall/building ruin.
Site-331	Not Defined	Site-19	Low	-	Modern herder's pen.
Site-332	Not Defined	Site-19	High	-	Obsidian scatter. Debitage. Maybe washed down from above. A sample was collected.
Site-333	Not Defined	Site-19	High	-	Stone circle with obsidian tools inside.
Site-334	Not Defined	Site-19	Medium	-	Possible small stone grave
Site-335	Not Defined	Site 14	Medium	-	A wide scatter of artefacts including obsidian tools and ceramics sherds.
Site-336	Not Defined	Site 28	Uncertain, Not Visited	-	Possible cluster of domestic structures identified during satellite imagery analysis.
Site-337	Not Defined	Site 28	Uncertain, Not Visited	-	Possible cluster of domestic structures identified during satellite imagery analysis.
Site-338	Not Defined	Site 28	Uncertain, Not Visited	-	Possible cluster of domestic structures identified during satellite imagery analysis.
Site-339	Not Defined	Site 28	Uncertain, Not Visited	-	Possible kurgan identified during satellite imagery analysis.
Site-340	Not Defined	Site 28	Uncertain, Not Visited	-	Possible kurgan identified during satellite imagery analysis.

Table 4.19.2: Listing of Archaeological Finds

ESIA Site ID	Armenian NGO Site ID	Project Location	ERM Judgement of Importance	Armenian Archaeologist's Description	ERM Description
Site-341	Not Defined	Site 28	Uncertain, Not Visited	-	Possible kurgan identified during satellite imagery analysis.
Site-342	Not Defined	Site 28	Uncertain, Not Visited	-	Possible kurgan identified during satellite imagery analysis.
Site-343	Not Defined	Site 28	Uncertain, Not Visited	-	Possible kurgan identified during satellite imagery analysis.
Site-344	Not Defined	Site 28	Uncertain, Not Visited	-	Possible kurgan identified during satellite imagery analysis.
Site-345	Not Defined	Site 28	Uncertain, Not Visited	-	Possible kurgan identified during satellite imagery analysis.
Site-346	Not Defined	Site 28	Uncertain, Not Visited	-	Possible kurgan identified during satellite imagery analysis.
Site-347	Not Defined	Site 28	Uncertain, Not Visited	Grave Mound	-
Site-348	Not Defined	Site 28	Uncertain, Not Visited	Grave Mound	-
Site-349	Not Defined	Site 28	Uncertain, Not Visited	Grave Mound	-
Site-350	Not Defined	Site 28	Uncertain, Not Visited	Tomb	-
Site-351	Not Defined	Site 28	Uncertain, Not Visited	Crypt	-
Site-352	Not Defined	Site 28	Uncertain, Not Visited	Crypt	-
Site-353	Not Defined	Site 28	Uncertain, Not Visited	Crypt	-

Table 4.19.2: Listing of Archaeological Finds

ESIA Site ID	Armenian NGO Site ID	Project Location	ERM Judgement of Importance	Armenian Archaeologist's Description	ERM Description
Site-354	Not Defined	Site 28	Uncertain, Not Visited	Cavern	-
Site-355	Not Defined	Site 28	Uncertain, Not Visited	Cavern	-
Site-356	Not Defined	Site 28	Uncertain, Not Visited	Cavern	-
Site-357	Not Defined	Site 28	Uncertain, Not Visited	Tomb mound	-
Site-358	Not Defined	Site 28	Uncertain, Not Visited	Tomb mound	-
Site-359	Not Defined	Site 28	Uncertain, Not Visited	Tomb mound	-
Site-360	Not Defined	Site 28	Uncertain, Not Visited	Tomb mound	-
Site-361	Not Defined	Site 28	Uncertain, Not Visited	Tomb mound	-
Site-362	Not Defined	Site 28	Uncertain, Not Visited	Tomb mound	-
Site-363	Not Defined	Site 28	Uncertain, Not Visited	Tomb mound	-
Site-364	Not Defined	Site 28	Uncertain, Not Visited	Tomb mound	-
Site-365	Not Defined	Site 28	Uncertain, Not Visited	Tomb mound	-
Site-366	Not Defined	Site 28	Uncertain, Not Visited	Tomb mound	-

Table 4.19.2: Listing of Archaeological Finds

ESIA Site ID	Armenian NGO Site ID	Project Location	ERM Judgement of Importance	Armenian Archaeologist's Description	ERM Description
Site-367	Not Defined	Site 28	Uncertain, Not Visited	Tomb mound	-
Site-368	Not Defined	Site 28	Uncertain, Not Visited	Tomb mound	-
Site-369	Not Defined	Site 28	Uncertain, Not Visited	Tomb mound	-
Site-370	Not Defined	Site 28	Uncertain, Not Visited	Tomb mound	-
Site-371	Not Defined	Site 28	Uncertain, Not Visited	Tomb mound	-
Site-372	Not Defined	Site 28	Uncertain, Not Visited	Tomb mound	-
Site-373	Not Defined	Site 28	Uncertain, Not Visited	Tomb mound	-
Site-374	Not Defined	Site 28	Uncertain, Not Visited	Tomb mound	-
Site-375	Not Defined	Site 28	Uncertain, Not Visited	Tomb mound	-
Site-376	Not Defined	Site 28	Uncertain, Not Visited	Tomb mound	-
Site-377	Not Defined	Site 28	Uncertain, Not Visited	Tomb mound	-
Site-378	Not Defined	Site 28	Uncertain, Not Visited	Tomb mound	-
Site-379	Not Defined	Site 28	Uncertain, Not Visited	Tomb mound	-

Table 4.19.2: Listing of Archaeological Finds

ESIA Site ID	Armenian NGO Site ID	Project Location	ERM Judgement of Importance	Armenian Archaeologist's Description	ERM Description
Site-380	Not Defined	Site 28	Uncertain, Not Visited	Tomb mound	-
Site-381	Not Defined	Site 28	Uncertain, Not Visited	Tomb mound	-
Site-382	Not Defined	Site 28	Uncertain, Not Visited	Tomb mound	-
Site-383	Not Defined	Site 28	Uncertain, Not Visited	Tomb mound	-
Site-384	Not Defined	Site 28	Uncertain, Not Visited	Tomb mound	-
Site-385	Not Defined	Site 28	Uncertain, Not Visited	Tomb mound	-
Site-386	Not Defined	Site 28	Uncertain, Not Visited	Tomb mound	-
Site-387	Not Defined	Site 28	Uncertain, Not Visited	Tomb mound	-
Site-388	Not Defined	Site 28	Uncertain, Not Visited	Tomb mound	-
Site-389	Not Defined	Site 28	Uncertain, Not Visited	Tomb mound	-
Site-390	Not Defined	Site 28	Uncertain, Not Visited	Tomb mound	-
Site-391	Not Defined	Site 28	Uncertain, Not Visited	Tomb mound	-
Site-392	Not Defined	Site 28	Uncertain, Not Visited	Tomb mound	-

Table 4.19.2: Listing of Archaeological Finds

ESIA Site ID	Armenian NGO Site ID	Project Location	ERM Judgement of Importance	Armenian Archaeologist's Description	ERM Description
Site-393	Not Defined	Site 28	Uncertain, Not Visited	Tomb mound	-
Site-394	Not Defined	Site 28	Uncertain, Not Visited	Tomb mound	-
Site-395	Not Defined	Site 28	Uncertain, Not Visited	Tomb mound	-
Site-396	Not Defined	Site 28	Uncertain, Not Visited	Tomb mound	-
Site-397	Not Defined	Site 28	Uncertain, Not Visited	Tomb mound	-
Site-398	Not Defined	Site 28	Uncertain, Not Visited	Tomb mound	-
Site-399	Not Defined	Site 28	Uncertain, Not Visited	Tomb mound	-
Site-400	Not Defined	Site 28	Uncertain, Not Visited	Tomb mound	-
Site-401	Not Defined	Site 28	Uncertain, Not Visited	Tomb mound	-
Site-402	Not Defined	Site 28	Uncertain, Not Visited	Tomb mound	-
Site-403	Not Defined	Site 28	Uncertain, Not Visited	Tomb mound	-
Site-404	Not Defined	Site 28	Uncertain, Not Visited	Tomb mound	-
Site-405	Not Defined	Site 28	Uncertain, Not Visited	Tomb mound	-

Table 4.19.2: Listing of Archaeological Finds

ESIA Site ID	Armenian NGO Site ID	Project Location	ERM Judgement of Importance	Armenian Archaeologist's Description	ERM Description
Site-406	Not Defined	Site 28	Uncertain, Not Visited	Tomb mound	-
Site-407	Not Defined	Site 28	Uncertain, Not Visited	Tomb mound	-
Site-408	Not Defined	Site 28	Uncertain, Not Visited	Tomb mound	-
Site-409	Not Defined	Site 28	Uncertain, Not Visited	Tomb mound	-
Site-410	Not Defined	Site 28	Uncertain, Not Visited	Tomb mound	-
Site-411	Not Defined	Site 28	Uncertain, Not Visited	Tomb mound	-
Site-412	Not Defined	Site 28	Uncertain, Not Visited	Tomb mound	-
Site-413	Not Defined	Site 28	Uncertain, Not Visited	Tomb mound	-
Site-414	Not Defined	Site 28	Uncertain, Not Visited	Tomb mound	-
Site-415	Not Defined	Site 28	Uncertain, Not Visited	Circular stone wall foundations	-
Site-416	Not Defined	Site 28	Uncertain, Not Visited	Circular stone wall foundations	-
Site-417	Not Defined	Site 28	Uncertain, Not Visited	Circular stone wall foundations	-
Site-418	Not Defined	Site 28	Uncertain, Not Visited	Circular stone wall foundations	-

Table 4.19.2: Listing of Archaeological Finds

ESIA Site ID	Armenian NGO Site ID	Project Location	ERM Judgement of Importance	Armenian Archaeologist's Description	ERM Description
Site-419	Not Defined	Site 28	Uncertain, Not Visited	Circular stone wall foundations	-
Site-420	Not Defined	Site 28	Uncertain, Not Visited	Circular stone wall foundations	-
Site-421	Not Defined	Site 28	Uncertain, Not Visited	Circular stone wall foundations	-
Site-422	Not Defined	Site 28	Uncertain, Not Visited	Circular stone wall foundations	-
Site-423	Not Defined	Site 28	Uncertain, Not Visited	Tomb	-
Site-424	Not Defined	Site 28	Uncertain, Not Visited	Tomb	-
Site-425	Not Defined	Site 28	Uncertain, Not Visited	Tomb	-
Site-426	Not Defined	Site 28	Uncertain, Not Visited	Tomb	-
Site-427	Not Defined	Site 28	Uncertain, Not Visited	Tomb	-
Site-428	Not Defined	Site 28	Uncertain, Not Visited	Tomb	-
Site-429	Not Defined	Site 28	Uncertain, Not Visited	Tomb	-
Site-430	Not Defined	Site 28	Uncertain, Not Visited	Tomb	-
Site-431	Not Defined	Site 28	Uncertain, Not Visited	Tomb	-

Table 4.19.2: Listing of Archaeological Finds

ESIA Site ID	Armenian NGO Site ID	Project Location	ERM Judgement of Importance	Armenian Archaeologist's Description	ERM Description
Site-432	Not Defined	Site 28	Uncertain, Not Visited	Tomb	-
Site-433	Not Defined	Site 28	Uncertain, Not Visited	Tomb	-
Site-434	Not Defined	Site 28	Uncertain, Not Visited	Tomb	-
Site-435	Not Defined	Site 28	Uncertain, Not Visited	Tomb	-
Site-436	Not Defined	Site 28	Uncertain, Not Visited	Walls	-
Site-437	Not Defined	Site 28	Uncertain, Not Visited	Walls	-
Site-438	Not Defined	Site 27	Uncertain, Not Visited	Phallic monolith	-
Site-439	Not Defined	Site 27	Uncertain, Not Visited	Isolated small structure	-
Site-440	Not Defined	Site 27	Uncertain, Not Visited	Isolated small structure	-
Site-441	Not Defined	Site 27	Uncertain, Not Visited	19 th -20 th century structure and grave	-
Site-442	Not Defined	Site 27	Uncertain, Not Visited	Tomb	-
Site-443	Not Defined	Site 27	Uncertain, Not Visited	Eneolithic artefact scatter	-
Site-444	Not Defined	Site 27	Uncertain, Not Visited	Wall ruin	-

Table 4.19.2: Listing of Archaeological Finds

ESIA Site ID	Armenian NGO Site ID	Project Location	ERM Judgement of Importance	Armenian Archaeologist's Description	ERM Description
Site-445	Not Defined	Site 27	Uncertain, Not Visited	Petroglyph	-
Site-446	Not Defined	Site 27	Uncertain, Not Visited	Kteis	-
Site-447	Not Defined	Site 27	Uncertain, Not Visited	Cluster of structures	-
Site-448	Not Defined	Site 27	Uncertain, Not Visited	Large structure	-
Site-449	Not Defined	Site 27	Uncertain, Not Visited	Tumulus	-
Site-450	Not Defined	Site 27	Uncertain, Not Visited	Animal corral	-
Site-451	Not Defined	Site 27	Uncertain, Not Visited	Petroglyph and temple	-
Site-452	Not Defined	Site 27	Uncertain, Not Visited	Cluster of structures	-
Site-453	Not Defined	Site 27	Uncertain, Not Visited	Isolated small structure	-
Site-454	Not Defined	Site 27	Uncertain, Not Visited	Structure	-
Site-455	Not Defined	Site 27	Uncertain, Not Visited	Tower	-
Site-456	Not Defined	Site 27	Uncertain, Not Visited	Road	-
Site-457	Not Defined	Site 27	Uncertain, Not Visited	Tower	-

Table 4.19.2: Listing of Archaeological Finds

ESIA Site ID	Armenian NGO Site ID	Project Location	ERM Judgement of Importance	Armenian Archaeologist's Description	ERM Description
Site-458	Not Defined	Conveyor Corridor/ Main Access Road	Uncertain, Not Visited	Terrace wall	-
Site-459	Not Defined	Conveyor Corridor/ Main Access Road	Uncertain, Not Visited	Obsidian tool	-
Site-460	Not Defined	Conveyor Corridor/ Main Access Road	Uncertain, Not Visited	Tumuli	-
Site-461	Not Defined	Conveyor Corridor/ Main Access Road	Uncertain, Not Visited	Tower	-
Site-462	Not Defined	Conveyor Corridor/ Main Access Road	Uncertain, Not Visited	Tower	-
Site-463	Not Defined	Conveyor Corridor/ Main Access Road	Uncertain, Not Visited	Tower	-
Site-464	Not Defined	Conveyor Corridor/ Main Access Road	Uncertain, Not Visited	Stone pile with tower in centre	-
Site-465	Not Defined	Conveyor Corridor/ Main Access Road	Uncertain, Not Visited	Tumulus	-
Site-466	Not Defined	Conveyor Corridor/ Main Access Road	Uncertain, Not Visited	Tumuli	-
Site-467	Not Defined	Conveyor Corridor/ Main Access Road	Uncertain, Not Visited	Fort and tumuli	-
Site-468	Not Defined	Conveyor Corridor/ Main Access Road	Uncertain, Not Visited	Terrace	-

Table 4.19.2: Listing of Archaeological Finds

ESIA Site ID	Armenian NGO Site ID	Project Location	ERM Judgement of Importance	Armenian Archaeologist's Description	ERM Description
Site-469	Not Defined	Conveyor Corridor/ Main Access Road	Uncertain, Not Visited	Fort	-
Site-470	Not Defined	Conveyor Corridor/ Main Access Road	Uncertain, Not Visited	Tower-shaped stone mounds	-
Site-471	Not Defined	Conveyor Corridor/ Main Access Road	Uncertain, Not Visited	Stone tower	-
Site-472	Not Defined	Conveyor Corridor/ Main Access Road	Uncertain, Not Visited	Wall	-
Site-473	Not Defined	Conveyor Corridor/ Main Access Road	Uncertain, Not Visited	Stone tower	-
Site-474	Not Defined	Conveyor Corridor/ Main Access Road	Uncertain, Not Visited	Stone tower	-
Site-475	Not Defined	Site 27	Uncertain, Not Visited	Obsidian artefacts	-
Site-476	Not Defined	Site 27	Uncertain, Not Visited	Tombs	-
Site-477	Not Defined	Site 27	Uncertain, Not Visited	Fortress wall	-
Site-478	Not Defined	Site 27	Uncertain, Not Visited	Sanctuary	-
Site-479	Not Defined	Site 27	Uncertain, Not Visited	20th century, Azeri herder's summer camp and possible child burial	-

Table 4.19.2: Listing of Archaeological Finds

ESIA Site ID	Armenian NGO Site ID	Project Location	ERM Judgement of Importance	Armenian Archaeologist's Description	ERM Description
Site -480	Not Defined	Site 28	Uncertain, Not Visited	Tomb	-
Site-481	Not Defined	Site 28	Uncertain, Not Visited	Crypt	-
Site-482	Not Defined	Site 28	Uncertain, Not Visited	Obsidian Artefact Scatter	-
Site-483	Not Defined	Site 28	Uncertain, Not Visited	Obsidian Artefact Scatter	-
Site-484	Not Defined	Site 28	Uncertain, Not Visited	Crypt	-
Site-485	Not Defined	Site 28	Uncertain, Not Visited	Crypt	-
Site-486	Not Defined	Site 28	Uncertain, Not Visited	Crypt	-
Site-487	Not Defined	Site 28	Uncertain, Not Visited	Potential Kurgan	Possible kurgan burial mound identified during ERM remote sensing survey
Notes	ERM Judgement of Importance				
	Negligible				
	Low				
	Medium				
	High				
	Very High				
	Uncertain				